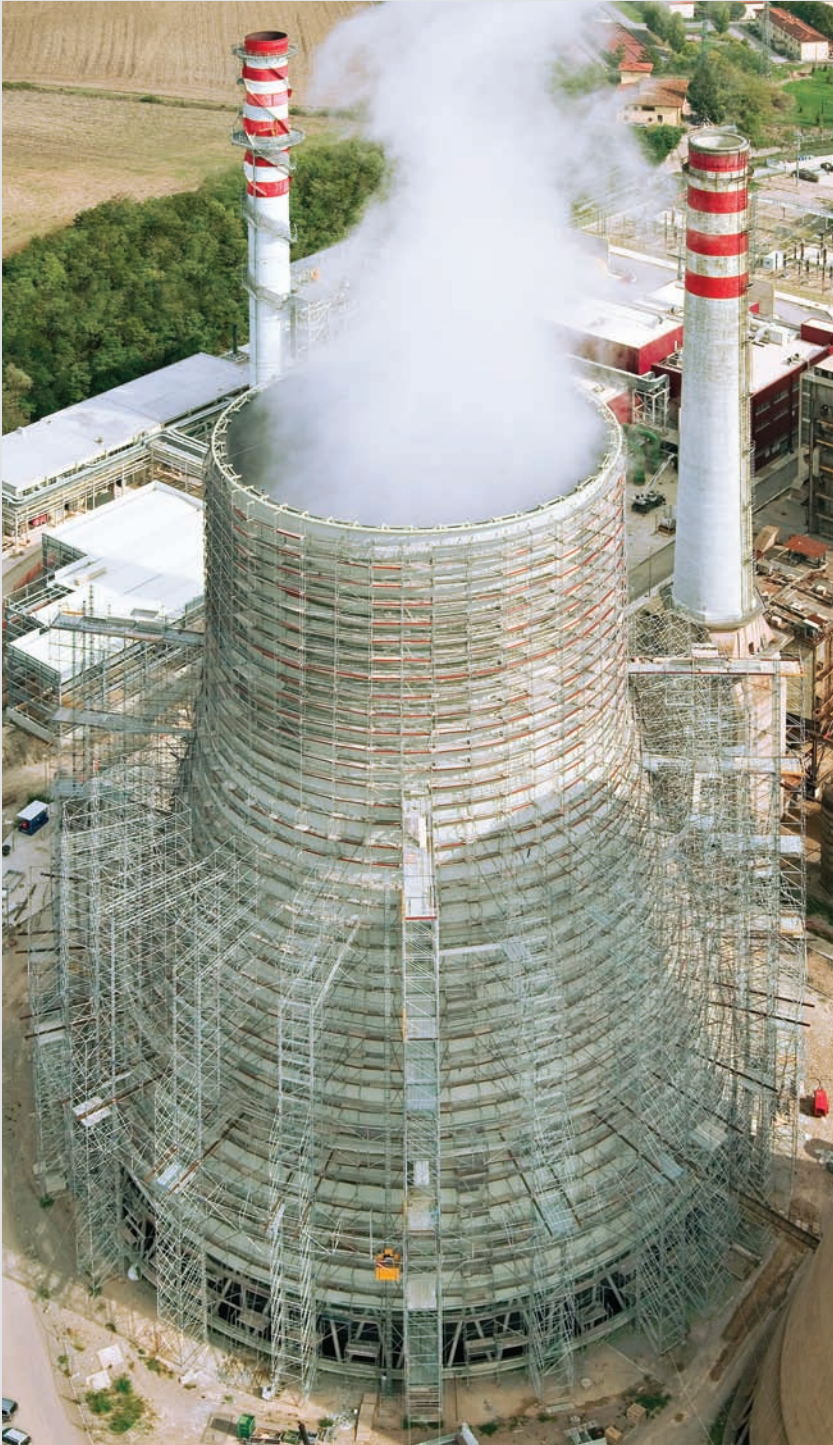


FEATURED JOB

Santa Barbara Power Plant Italy



This 81m high cooling tower at a power plant in Italy required work because of new seismic regulations.

SPARER Ponteggi, the local scaffold erection company, was not allowed to anchor the scaffolding to the cooling tower at all.

Layher provided plans for a free-standing circular scaffold with buttress bays built from a combination of Layher Allround and SpeedyScaf.

About 18 km of steel wire was used to anchor the buttress bays to the ground to keep the weight of the scaffold away from the cooling tower.

There was a total of 18,000 m² of scaffold.

Thanks to Layher Italy for the use of this photo.

LAYHER PTY LTD
Ph 1300 136 026
info@layher.com.au
www.layher.com.au
AUSTRALIA

Layher® 

More Possibilities. The Scaffolding System.

LAYHER LTD
Ph 0800 529 437
info@layher.co.nz
www.layher.co.nz
NEW ZEALAND