

# FEATURED JOB

## Xavier College Theatre

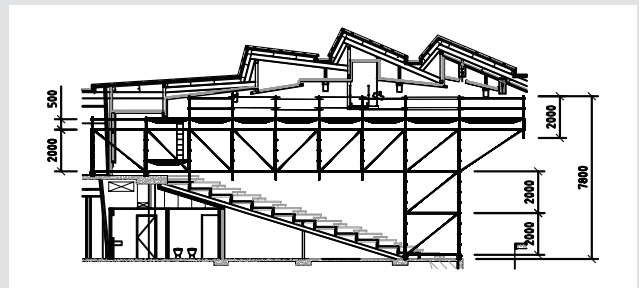


Scaffolding the new 450 seat theatre at this Melbourne college required a 350m<sup>2</sup> suspended mat scaffold that appears to float above the auditorium. Supported only at each end it extends over 18m from front to back, and from side to side it spans up to 20m without additional support.

Walton Construction's Site Manager Neil Timms said, "Not only did the fast installation of Layher Allround enable us to start the project one month ahead of schedule, it also gave us the ability to overlap trades on site to save time; something that could not be achieved using other systems." Neil also mentioned that "...by doing away with the need for a birdcage, construction of the tiered seating began more than 3 weeks earlier than expected."

The AutoCAD drawings were prepared by Laura Barnett from the Layher Design Team.

Thanks to Walton Construction and Paul Houghton of SwiftScaff for the use of this photo.



**LAYHER PTY LTD**  
Ph 1300 136 026  
[info@layher.com.au](mailto:info@layher.com.au)  
[www.layher.com.au](http://www.layher.com.au)  
**AUSTRALIA**

**Layher** 

More Possibilities. The Scaffolding System.

**LAYHER LTD**  
Ph 0800 529 437  
[info@layher.co.nz](mailto:info@layher.co.nz)  
[www.layher.co.nz](http://www.layher.co.nz)  
**NEW ZEALAND**